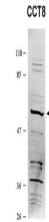


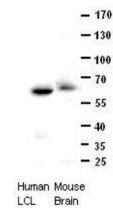
Product Datasheet

CCT8 antibody (orb579589)

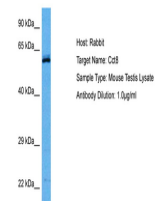
Description	Rabbit polyclonal antibody to CCT8
Species/Host	Rabbit
Reactivity	Human, Mouse
Conjugation	Unconjugated
Tested Applications	WB
Immunogen	The immunogen is a synthetic peptide directed towards the C terminal region of human CCT8
Target	CCT8
Preservatives	Liquid. Purified antibody supplied in 1x PBS buffer with 0.09% (w/v) sodium azide and 2% sucrose.
Form/Appearance	Liquid. Purified antibody supplied in 1x PBS buffer with 0.09% (w/v) sodium azide and 2% sucrose.
Concentration	0.5 mg/ml
Storage	Maintain refrigerated at 2-8°C for up to 2 weeks. For long term storage store at -20°C in small aliquots to prevent freeze-thaw cycles.
Note	For research use only
Protein Sequence	Synthetic peptide located within the following region: DMLEAGILDITYLGKYWAIKLATNAAVTVLRVDQIIMAKPAGGPKPPSGKK
Clonality	Polyclonal
MW	59kDa
Uniprot ID	Q5RAP1
NCBI	NP_006576
Expiration Date	12 months from date of receipt.



CCT8 antibody - C-terminal region (orb57...



CCT8 antibody - C-terminal region (orb57...



Host: Mouse,
Target Name:
CCT8, Sample
T...