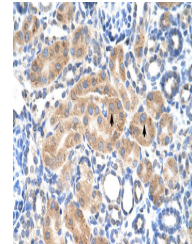


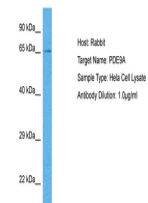
Product Datasheet

PDE9A antibody (orb579570)

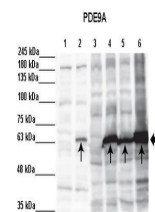
Description	Rabbit polyclonal antibody to PDE9A
Species/Host	Rabbit
Reactivity	Human, Mouse
Conjugation	Unconjugated
Tested Applications	IHC, WB
Immunogen	The immunogen is a synthetic peptide directed towards the N terminal region of human PDE9A
Target	PDE9A
Preservatives	Liquid. Purified antibody supplied in 1x PBS buffer with 0.09% (w/v) sodium azide and 2% sucrose.
Form/Appearance	Liquid. Purified antibody supplied in 1x PBS buffer with 0.09% (w/v) sodium azide and 2% sucrose.
Concentration	0.5 mg/ml
Storage	Maintain refrigerated at 2-8°C for up to 2 weeks. For long term storage store at -20°C in small aliquots to prevent freeze-thaw cycles.
Note	For research use only
Protein Sequence	Synthetic peptide located within the following region: SDIKKMREELAARSSRTNCPCCKYSFLDNHKKLTPRRDVPTYPKYLLSPET
Clonality	Polyclonal
MW	61kDa
Uniprot ID	O76083
NCBI	NP_001001581
Expiration Date	12 months from date of receipt.



Human kidney



Host: Rabbit,
Target Name:
PDE9A,
Sample...



Sample Type:
Lane 1: 5 ug in
vitro trans...