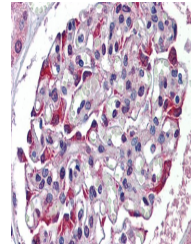


Product Datasheet

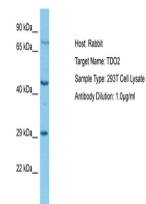
TDO2 antibody (orb579553)

Description	Rabbit polyclonal antibody to TDO2
Species/Host	Rabbit
Reactivity	Human
Conjugation	Unconjugated
Tested Applications	IHC, WB
Immunogen	The immunogen is a synthetic peptide directed towards the N terminal region of human TDO2
Target	TDO2
Preservatives	Liquid. Purified antibody supplied in 1x PBS buffer with 0.09% (w/v) sodium azide and 2% sucrose.
Form/Appearance	Liquid. Purified antibody supplied in 1x PBS buffer with 0.09% (w/v) sodium azide and 2% sucrose.
Concentration	0.5 mg/ml
Storage	Maintain refrigerated at 2-8°C for up to 2 weeks. For long term storage store at -20°C in small aliquots to prevent freeze-thaw cycles.
Note	For research use only
Protein Sequence	Synthetic peptide located within the following region: MSGCPFLGNNFGYTFKKLPEVEGSEEDKSQTGVNRASKGGLIYGNYLHLEK
Clonality	Polyclonal
MW	48kDa
Uniprot ID	P48775
NCBI	NP_005642
Expiration Date	12 months from date of receipt.



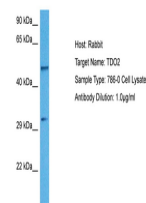
Anti-TDO2 antibody IHC of human kidney.

...



Host: Rabbit, Target Name: TDO2, Sample

...



Host: Rabbit, Target Name: TDO2, Sample

...