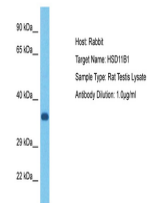


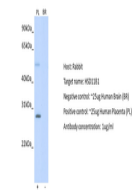
Product Datasheet

HSD11B1 antibody (orb579552)

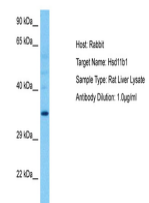
Description	Rabbit polyclonal antibody to HSD11B1
Species/Host	Rabbit
Reactivity	Human, Rat
Conjugation	Unconjugated
Tested Applications	IHC, WB
Immunogen	The immunogen is a synthetic peptide directed towards the N terminal region of human HSD11B1
Target	HSD11B1
Preservatives	Liquid. Purified antibody supplied in 1x PBS buffer with 0.09% (w/v) sodium azide and 2% sucrose.
Form/Appearance	Liquid. Purified antibody supplied in 1x PBS buffer with 0.09% (w/v) sodium azide and 2% sucrose.
Concentration	0.5 mg/ml
Storage	Maintain refrigerated at 2-8°C for up to 2 weeks. For long term storage store at -20°C in small aliquots to prevent freeze-thaw cycles.
Note	For research use only
Protein Sequence	Synthetic peptide located within the following region: QKVVSHCLELGAASAHYIAGTMEDMTFAEQFVAQAGKLMGGLDMLLNHI
Clonality	Polyclonal
MW	32kDa
Uniprot ID	P28845
NCBI	NP_005516
Expiration Date	12 months from date of receipt.



Host: Rabbit,
Target Name:
HSD11B1,
Samp...



Host: Rabbit,
Target:
HSD11B1,
Positive ...



Host: Rat,
Target Name:
HSD11B1,
Sample ...