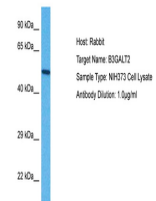


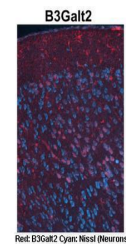
Product Datasheet

B3galt2 antibody (orb579494)

| | |
|----------------------------|---|
| Description | Rabbit polyclonal antibody to B3galt2 |
| Species/Host | Rabbit |
| Reactivity | Mouse |
| Conjugation | Unconjugated |
| Tested Applications | IHC, WB |
| Immunogen | The immunogen is a synthetic peptide corresponding to a region of Mouse |
| Target | B3galt2 |
| Preservatives | Liquid. Purified antibody supplied in 1x PBS buffer with 0.09% (w/v) sodium azide and 2% sucrose. |
| Form/Appearance | Liquid. Purified antibody supplied in 1x PBS buffer with 0.09% (w/v) sodium azide and 2% sucrose. |
| Concentration | 0.5 mg/ml |
| Storage | Maintain refrigerated at 2-8°C for up to 2 weeks. For long term storage store at -20°C in small aliquots to prevent freeze-thaw cycles. |
| Note | For research use only |
| Protein Sequence | Synthetic peptide located within the following region: RVDPVPPPNFVFNHWRVSYSSCKYSHLITSHQFQPSELIKYWNHLQQNK |
| Clonality | Polyclonal |
| MW | 49kDa |
| Uniprot ID | O54905 |
| NCBI | NP_064409 |
| Expiration Date | 12 months from date of receipt. |



Host: Rabbit,
Target Name:
B3GALT2,
Samp...



Sample Type:
Adult mouse
cortex,
Primary...



WB Suggested
Anti-B3galt2
Antibody Titra...