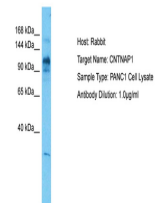


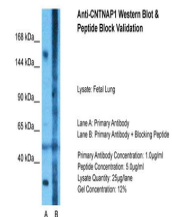
Product Datasheet

CNTNAP1 antibody (orb579481)

Description	Rabbit polyclonal antibody to CNTNAP1
Species/Host	Rabbit
Reactivity	Human
Conjugation	Unconjugated
Tested Applications	WB
Immunogen	The immunogen is a synthetic peptide directed towards the N terminal region of human CNTNAP1
Target	CNTNAP1
Preservatives	Liquid. Purified antibody supplied in 1x PBS buffer with 0.09% (w/v) sodium azide and 2% sucrose.
Form/Appearance	Liquid. Purified antibody supplied in 1x PBS buffer with 0.09% (w/v) sodium azide and 2% sucrose.
Concentration	0.5 mg/ml
Storage	Maintain refrigerated at 2-8°C for up to 2 weeks. For long term storage store at -20°C in small aliquots to prevent freeze-thaw cycles.
Note	For research use only
Protein Sequence	Synthetic peptide located within the following region: LQIDL MKKHRIRAVATQGSFNSWDVWVTRYMLLYGDRVDSWTPFYQRGHNS
Clonality	Polyclonal
MW	156kDa
Uniprot ID	P78357
NCBI	NP_003623
Expiration Date	12 months from date of receipt.



Host: Rabbit,
Target Name:
CNTNAP1,
Samp...



Host: Rabbit,
Target Name:
CNTNAP1,
Samp...



WB Suggested
Anti-CNTNAP1
Antibody Titra...