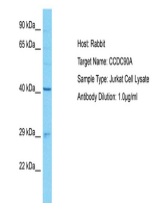


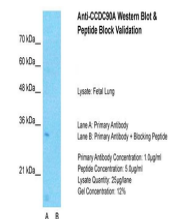
Product Datasheet

CCDC90A antibody (orb579285)

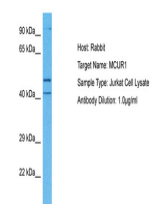
Description	Rabbit polyclonal antibody to CCDC90A
Species/Host	Rabbit
Reactivity	Human
Conjugation	Unconjugated
Tested Applications	WB
Immunogen	The immunogen is a synthetic peptide directed towards the middle region of human CCDC90A
Target	MCUR1
Preservatives	Liquid. Purified antibody supplied in 1x PBS buffer with 0.09% (w/v) sodium azide and 2% sucrose.
Form/Appearance	Liquid. Purified antibody supplied in 1x PBS buffer with 0.09% (w/v) sodium azide and 2% sucrose.
Concentration	0.5 mg/ml
Storage	Maintain refrigerated at 2-8°C for up to 2 weeks. For long term storage store at -20°C in small aliquots to prevent freeze-thaw cycles.
Note	For research use only
Protein Sequence	Synthetic peptide located within the following region: ELHQLKQQVMDEVIKVRTDTKLDNFNLEKSRVKELYSLNEKKLLELRTEIV
Clonality	Polyclonal
MW	40kDa
Uniprot ID	Q96AQ8
NCBI	NP_001026883
Expiration Date	12 months from date of receipt.



Host: Rabbit,
Target Name:
CCDC90A,
Samp...



Host: Rabbit,
Target Name:
CCDC90A,
Samp...



Host: Rabbit,
Target Name:
MCUR1,
Sample...