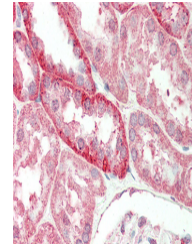


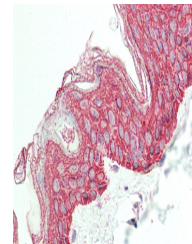
Product Datasheet

LETMD1 antibody (orb579271)

Description	Rabbit polyclonal antibody to LETMD1
Species/Host	Rabbit
Reactivity	Human
Conjugation	Unconjugated
Tested Applications	WB
Immunogen	The immunogen is a synthetic peptide directed towards the middle region of human LETMD1
Target	LETMD1
Preservatives	Liquid. Purified antibody supplied in 1x PBS buffer with 0.09% (w/v) sodium azide and 2% sucrose.
Form/Appearance	Liquid. Purified antibody supplied in 1x PBS buffer with 0.09% (w/v) sodium azide and 2% sucrose.
Concentration	0.5 mg/ml
Storage	Maintain refrigerated at 2-8°C for up to 2 weeks. For long term storage store at -20°C in small aliquots to prevent freeze-thaw cycles.
Note	For research use only
Protein Sequence	Synthetic peptide located within the following region: LLRHRLKTHTTVIHQDKALAKLGIGQLTAQEVKSACYLRGLNSTHIGED
Clonality	Polyclonal
MW	36kDa
Uniprot ID	Q6P1Q0
NCBI	NP_001019839
Expiration Date	12 months from date of receipt.



Rabbit Anti-LETMD1 antibody, Formalin Fi...



Rabbit Anti-LETMD1 antibody, Formalin Fi...



WB Suggested Anti-LETMD1 Antibody Titrat...