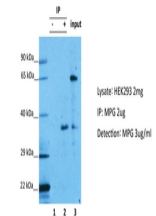


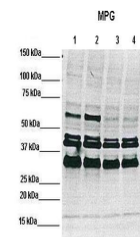
Product Datasheet

MPG antibody (orb579254)

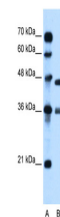
Description	Rabbit polyclonal antibody to MPG
Species/Host	Rabbit
Reactivity	Human
Conjugation	Unconjugated
Tested Applications	WB
Immunogen	The immunogen is a synthetic peptide directed towards the C terminal region of human MPG
Target	MPG
Preservatives	Liquid. Purified antibody supplied in 1x PBS buffer with 0.09% (w/v) sodium azide and 2% sucrose.
Form/Appearance	Liquid. Purified antibody supplied in 1x PBS buffer with 0.09% (w/v) sodium azide and 2% sucrose.
Concentration	0.5 mg/ml
Storage	Maintain refrigerated at 2-8°C for up to 2 weeks. For long term storage store at -20°C in small aliquots to prevent freeze-thaw cycles.
Note	For research use only
Protein Sequence	Synthetic peptide located within the following region: LEPSEPAVVAAARVGVGHAGEWARKPLRFYVRGSPWVSVVDRVAEQDTQA
Clonality	Polyclonal
MW	32kDa
Uniprot ID	Q5J9I4
NCBI	NP_001015052
Expiration Date	12 months from date of receipt.



MPG was immunoprecipitated from 2 mg HEK...



WB Suggested Anti-MPG Antibody, Positive...



WB Suggested Anti-MPG Antibody Titration...