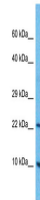


Product Datasheet

C4orf3 antibody (orb579159)

Description	Rabbit polyclonal antibody to C4orf3
Species/Host	Rabbit
Reactivity	Human
Conjugation	Unconjugated
Tested Applications	WB
Immunogen	The immunogen is a synthetic peptide directed towards the middle region of Human C4orf3
Target	C4orf3
Preservatives	Liquid. Purified antibody supplied in 1x PBS buffer with 0.09% (w/v) sodium azide and 2% sucrose.
Form/Appearance	Liquid. Purified antibody supplied in 1x PBS buffer with 0.09% (w/v) sodium azide and 2% sucrose.
Concentration	0.5 mg/ml
Storage	Maintain refrigerated at 2-8°C for up to 2 weeks. For long term storage store at -20°C in small aliquots to prevent freeze-thaw cycles.
Note	For research use only
Protein Sequence	Synthetic peptide located within the following region: RSEMEVDAPGVDGRDGLRERRRGFSEGGRQNFVDVRPQSGANGLPKHSYWLD
Clonality	Polyclonal
MW	21kDa
Uniprot ID	Q8WVX3
NCBI	NP_001163801
Expiration Date	12 months from date of receipt.



Host: Rabbit,
Target Name:
C4orf3, Sampl...