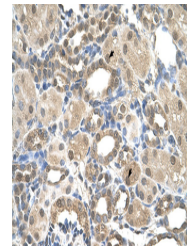


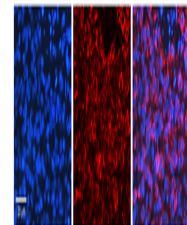
Product Datasheet

PSEN2 antibody (orb579119)

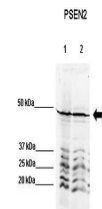
Description	Rabbit polyclonal antibody to PSEN2
Species/Host	Rabbit
Reactivity	Human, Mouse
Conjugation	Unconjugated
Tested Applications	IHC, WB
Immunogen	The immunogen is a synthetic peptide directed towards the N terminal region of human PSEN2
Target	PSEN2
Preservatives	Liquid. Purified antibody supplied in 1x PBS buffer with 0.09% (w/v) sodium azide and 2% sucrose.
Form/Appearance	Liquid. Purified antibody supplied in 1x PBS buffer with 0.09% (w/v) sodium azide and 2% sucrose.
Concentration	0.5 mg/ml
Storage	Maintain refrigerated at 2-8°C for up to 2 weeks. For long term storage store at -20°C in small aliquots to prevent freeze-thaw cycles.
Note	For research use only
Protein Sequence	Synthetic peptide located within the following region: VVVATIKSVRFYTEKNGQLIYTPFTEDTPSVGQRLLNSVLNLTLMISVIV
Clonality	Polyclonal
MW	49kDa
Uniprot ID	P49810
NCBI	NP_000438
Expiration Date	12 months from date of receipt.



Human kidney



PSEN2 antibody
- N-terminal
region (orb5...



WB Suggested
Anti-PSEN2
Antibody,
Positi...