

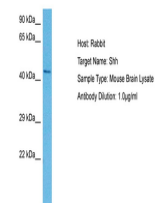
Product Datasheet

SHH antibody (orb579101)

Description	Rabbit polyclonal antibody to SHH
Species/Host	Rabbit
Reactivity	Gallus, Human, Mouse
Conjugation	Unconjugated
Tested Applications	IHC, WB
Immunogen	The immunogen is a synthetic peptide directed towards the N terminal region of human SHH
Target	SHH
Preservatives	Liquid. Purified antibody supplied in 1x PBS buffer with 0.09% (w/v) sodium azide and 2% sucrose.
Form/Appearance	Liquid. Purified antibody supplied in 1x PBS buffer with 0.09% (w/v) sodium azide and 2% sucrose.
Concentration	0.5 mg/ml
Storage	Maintain refrigerated at 2-8°C for up to 2 weeks. For long term storage store at -20°C in small aliquots to prevent freeze-thaw cycles.
Note	For research use only
Protein Sequence	Synthetic peptide located within the following region: RCLLLVLVSSLLVCSGLACGPRGFGKRRHPKLLTPLAYKQFIPNVAEKT
Clonality	Polyclonal
MW	28 kDa
Uniprot ID	Q15465
NCBI	NP_000184
Expiration Date	12 months from date of receipt.

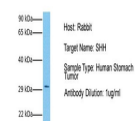


Chicken embryos,
Primary antibody:
1:100...



Host: Mouse,
Target Name:
SHH, Sample
Ti...

SHH



Host: Rabbit,
Target Name:
SHH, Sample
T...