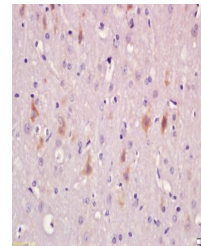


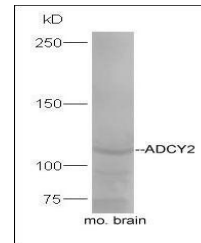
## Product Datasheet

### ADCY2 antibody (orb5791)

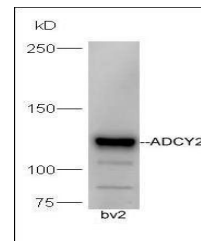
|                            |  |
|----------------------------|--|
| <b>Description</b>         | ADCY2 antibody   |
| <b>Species/Host</b>        | Rabbit   |
| <b>Reactivity</b>          | Mouse, Rat   |
| <b>Conjugation</b>         | Unconjugated   |
| <b>Tested Applications</b> | WB   |
| <b>Immunogen</b>           | KLH conjugated synthetic peptide derived from human ADCY2 (901-1091/1091 aa)     |
| <b>Target</b>              | ADCY2  |
| <b>Preservatives</b>       | 0.01M TBS(pH7.4) with 1% rAlbumin, 0.03% Proclin300 and 50% Glycerol.            |
| <b>Form/Appearance</b>     | Liquid   |
| <b>Concentration</b>       | 1mg/ml   |
| <b>Storage</b>             | Shipped at 4°C. Store at -20 °C for one year. Avoid repeated freeze/thaw cycles. |
| <b>Note</b>                | For research use only  |
| <b>Isotype</b>             | IgG  |
| <b>Clonality</b>           | Polyclonal   |
| <b>MW</b>                  | 124 kDa  |
| <b>Uniprot ID</b>          | <a href="#">Q08462</a>   |
| <b>Dilution Range</b>      | WB=1:500-2000  |
| <b>Expiration Date</b>     | 12 months from date of receipt.  |



Immunohistochemical staining of rat brain...



Western blot analysis of Mouse brain tis...



Western blot analysis of bv2 lysate usin...