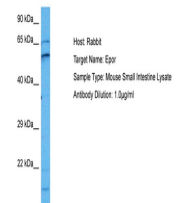


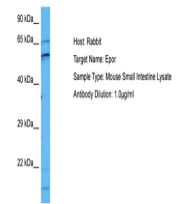
Product Datasheet

EPOR antibody (orb579090)

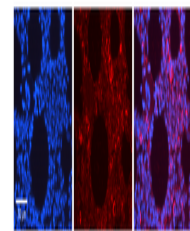
Description	Rabbit polyclonal antibody to EPOR
Species/Host	Rabbit
Reactivity	Animal, Bovine, Canine, Goat, Guinea pig, Human, Mouse, Rat
Conjugation	Unconjugated
Tested Applications	WB
Immunogen	The immunogen is a synthetic peptide directed towards the N terminal region of human EPOR
Target	EPOR
Preservatives	Liquid. Purified antibody supplied in 1x PBS buffer with 0.09% (w/v) sodium azide and 2% sucrose.
Form/Appearance	Liquid. Purified antibody supplied in 1x PBS buffer with 0.09% (w/v) sodium azide and 2% sucrose.
Concentration	0.5 mg/ml
Storage	Maintain refrigerated at 2-8°C for up to 2 weeks. For long term storage store at -20°C in small aliquots to prevent freeze-thaw cycles.
Note	For research use only
Protein Sequence	Synthetic peptide located within the following region: DHLGASLWPQVGSLLCLLLAGAAWAPPPNLPDPKFESKAALLAARGPEELL
Clonality	Polyclonal
MW	53kDa
Uniprot ID	P19235
NCBI	NP_000112
Expiration Date	12 months from date of receipt.



Host: Mouse,
Target Name:
EPOR, Sample
T...



Host: Rabbit,
Target Name:
EPOR, Sample
...



Rabbit Anti-
EPOR Antibody,
Catalog
Numbe...