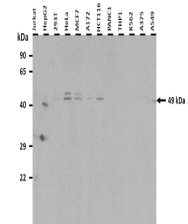


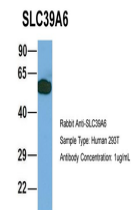
Product Datasheet

SLC39A6 antibody (orb578987)

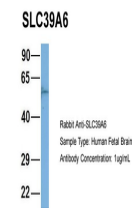
Description	Rabbit polyclonal antibody to SLC39A6
Species/Host	Rabbit
Reactivity	Human
Conjugation	Unconjugated
Tested Applications	IHC, WB
Immunogen	The immunogen is a synthetic peptide directed towards the middle region of human SLC39A6
Target	SLC39A6
Preservatives	Liquid. Purified antibody supplied in 1x PBS buffer with 0.09% (w/v) sodium azide and 2% sucrose.
Form/Appearance	Liquid. Purified antibody supplied in 1x PBS buffer with 0.09% (w/v) sodium azide and 2% sucrose.
Concentration	1.0 mg/ml
Storage	Maintain refrigerated at 2-8°C for up to 2 weeks. For long term storage store at -20°C in small aliquots to prevent freeze-thaw cycles.
Note	For research use only
Protein Sequence	Synthetic peptide located within the following region: RSCLIHTSEKKAEIPPKTYSLQIAWVGGFIAISIIFLSLLGVILVPLMN
Clonality	Polyclonal
MW	85 kDa
Uniprot ID	Q13433
NCBI	NP_001092876
Expiration Date	12 months from date of receipt.



25 ug of the indicated Human whole cell ...



Host: Rabbit,
Target Name:
HIRIP3,
Sampl...



Host: Rabbit,
Target Name:
NOP56,
Sample...