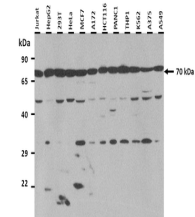


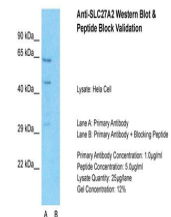
Product Datasheet

SLC27A2 antibody (orb578965)

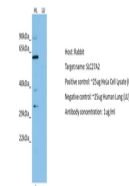
Description	Rabbit polyclonal antibody to SLC27A2
Species/Host	Rabbit
Reactivity	Human
Conjugation	Unconjugated
Tested Applications	IHC, WB
Immunogen	The immunogen is a synthetic peptide directed towards the N terminal region of human SLC27A2
Target	SLC27A2
Preservatives	Liquid. Purified antibody supplied in 1x PBS buffer with 0.09% (w/v) sodium azide and 2% sucrose.
Form/Appearance	Liquid. Purified antibody supplied in 1x PBS buffer with 0.09% (w/v) sodium azide and 2% sucrose.
Concentration	0.5 mg/ml
Storage	Maintain refrigerated at 2-8°C for up to 2 weeks. For long term storage store at -20°C in small aliquots to prevent freeze-thaw cycles.
Note	For research use only
Protein Sequence	Synthetic peptide located within the following region: LLFRDETLTYAQVDRRSNQVARALHDHLGLRQGDVALLMGNEPAYVWLW
Clonality	Polyclonal
MW	70 kDa
Uniprot ID	O14975
NCBI	NP_003636
Expiration Date	12 months from date of receipt.



25 ug of the indicated Human whole cell ...



Host: Rabbit,
Target Name:
SLC27A2,
Samp...



Host: Rabbit,
Target:
SLC27A2,
Positive ...