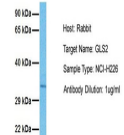


Product Datasheet

GLS2 antibody (orb578865)

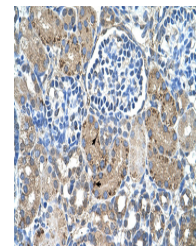
Description	Rabbit polyclonal antibody to GLS2
Species/Host	Rabbit
Reactivity	Human
Conjugation	Unconjugated
Tested Applications	IHC, WB
Immunogen	The immunogen is a synthetic peptide directed towards the middle region of human GLS2
Target	GLS2
Preservatives	Liquid. Purified antibody supplied in 1x PBS buffer with 0.09% (w/v) sodium azide and 2% sucrose.
Form/Appearance	Liquid. Purified antibody supplied in 1x PBS buffer with 0.09% (w/v) sodium azide and 2% sucrose.
Concentration	1.0 mg/ml
Storage	Maintain refrigerated at 2-8°C for up to 2 weeks. For long term storage store at -20°C in small aliquots to prevent freeze-thaw cycles.
Note	For research use only
Protein Sequence	Synthetic peptide located within the following region: FVGKEPSGLRYNKLKSLNNEEGIPHNPMVNAGAIVVSSLIKMDCNKA EK FDF
Clonality	Polyclonal
MW	36kDa
Uniprot ID	Q9UI32
NCBI	EAW96942
Expiration Date	12 months from date of receipt.

GLS2



Host: Rabbit,
Target Name:
GLS2, Sample

...



Human kidney



WB Suggested
Antibody
Titration: 2.5
ug/...