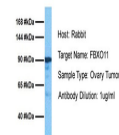


Product Datasheet

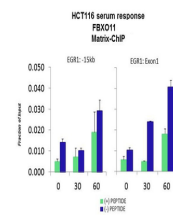
FBXO11 antibody (orb578790)

Description	Rabbit polyclonal antibody to FBXO11
Species/Host	Rabbit
Reactivity	Human
Conjugation	Unconjugated
Tested Applications	ChIP, WB
Immunogen	The immunogen is a synthetic peptide directed towards the middle region of human FBXO11
Target	FBXO11
Preservatives	Liquid. Purified antibody supplied in 1x PBS buffer with 0.09% (w/v) sodium azide and 2% sucrose.
Form/Appearance	Liquid. Purified antibody supplied in 1x PBS buffer with 0.09% (w/v) sodium azide and 2% sucrose.
Concentration	0.5 mg/ml
Storage	Maintain refrigerated at 2-8°C for up to 2 weeks. For long term storage store at -20°C in small aliquots to prevent freeze-thaw cycles.
Note	For research use only
Protein Sequence	Synthetic peptide located within the following region: HDVEFIRHDRFFCDGAGTLSNPCTLAGEPHTDHTDLYDSAPPIESNTLQ
Clonality	Polyclonal
MW	94kDa
Uniprot ID	Q6DF73
NCBI	NP_079409
Expiration Date	12 months from date of receipt.

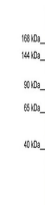
FBXO11



Host: Rabbit,
Target Name:
FBXO11,
Sampl...



Quiescent
human colon
carcinoma
HCT116 c...



WB Suggested
Anti-FBXO11
Antibody
Titrat...