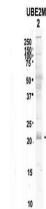


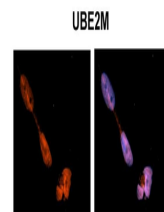
Product Datasheet

UBE2M antibody (orb578688)

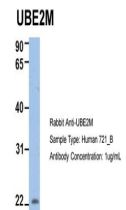
Description	Rabbit polyclonal antibody to UBE2M
Species/Host	Rabbit
Reactivity	Human, Mouse
Conjugation	Unconjugated
Tested Applications	IHC, WB
Immunogen	The immunogen is a synthetic peptide directed towards the N terminal region of human UBE2M
Target	UBE2M
Preservatives	Liquid. Purified antibody supplied in 1x PBS buffer with 0.09% (w/v) sodium azide and 2% sucrose.
Form/Appearance	Liquid. Purified antibody supplied in 1x PBS buffer with 0.09% (w/v) sodium azide and 2% sucrose.
Concentration	0.5 mg/ml
Storage	Maintain refrigerated at 2-8°C for up to 2 weeks. For long term storage store at -20°C in small aliquots to prevent freeze-thaw cycles.
Note	For research use only
Protein Sequence	Synthetic peptide located within the following region: IKLFLSKQQKKEEESAGGTKGSSKKASAAQLRIQKDINELNLPKTCDISF
Clonality	Polyclonal
MW	21kDa
Uniprot ID	P61081
NCBI	NP_003960
Expiration Date	12 months from date of receipt.



Sample Type:
2. mouse brain
extracts (80...



Sample Type:
NT2 cells, Red:
Antibody, B...



Host: Rabbit,
Target Name:
UBE2M,
Sample...