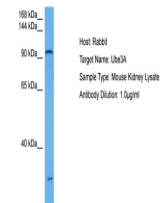


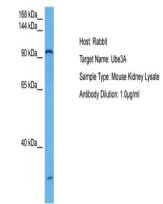
Product Datasheet

UBE3A antibody (orb578661)

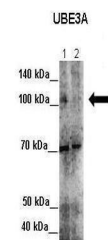
Description	Rabbit polyclonal antibody to UBE3A
Species/Host	Rabbit
Reactivity	Human, Mouse
Conjugation	Unconjugated
Tested Applications	WB
Immunogen	The immunogen is a synthetic peptide directed towards the middle region of human UBE3A
Target	UBE3A
Preservatives	Liquid. Purified antibody supplied in 1x PBS buffer with 0.09% (w/v) sodium azide and 2% sucrose.
Form/Appearance	Liquid. Purified antibody supplied in 1x PBS buffer with 0.09% (w/v) sodium azide and 2% sucrose.
Concentration	0.5 mg/ml
Storage	Maintain refrigerated at 2-8°C for up to 2 weeks. For long term storage store at -20°C in small aliquots to prevent freeze-thaw cycles.
Note	For research use only
Protein Sequence	Synthetic peptide located within the following region: AKNGPDTERLPTSHTCFNVLLLPEYSSKEKLLKERLLKAITYAKGFGML
Clonality	Polyclonal
MW	101kDa
Uniprot ID	Q05086
NCBI	NP_000453
Expiration Date	12 months from date of receipt.



Host: Mouse,
Target Name:
UBE3A, Sample
...



Host: Rabbit,
Target Name:
UBE3A,
Sample...



Lanes: Lane 1:
7 ug HeLa
lysate+EGFP
SiR...