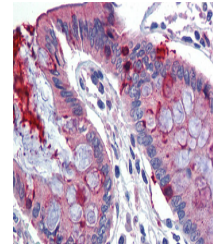


Product Datasheet

LIN7C antibody (orb578641)

Description	Rabbit polyclonal antibody to LIN7C
Species/Host	Rabbit
Reactivity	Human
Conjugation	Unconjugated
Tested Applications	IHC, WB
Immunogen	The immunogen is a synthetic peptide directed towards the N terminal region of human LIN7C
Target	LIN7C
Preservatives	Liquid. Purified antibody supplied in 1x PBS buffer with 0.09% (w/v) sodium azide and 2% sucrose.
Form/Appearance	Liquid. Purified antibody supplied in 1x PBS buffer with 0.09% (w/v) sodium azide and 2% sucrose.
Concentration	0.5 mg/ml
Storage	Maintain refrigerated at 2-8°C for up to 2 weeks. For long term storage store at -20°C in small aliquots to prevent freeze-thaw cycles.
Note	For research use only
Protein Sequence	Synthetic peptide located within the following region: MAALGEPVRLERDICRAIELLEKLQRSGEVPPQKLQALQRVLQSEFCNAV
Clonality	Polyclonal
MW	22kDa
Uniprot ID	Q9NUP9
NCBI	NP_060832
Expiration Date	12 months from date of receipt.



Immunohistochemistry with Human Colon Ly...



WB Suggested Anti-LIN7C Antibody Titrati...