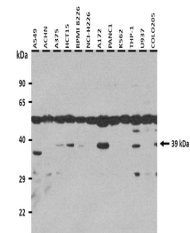


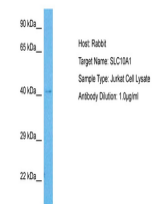
Product Datasheet

SLC10A1 antibody (orb578335)

Description	Rabbit polyclonal antibody to SLC10A1
Species/Host	Rabbit
Reactivity	Human
Conjugation	Unconjugated
Tested Applications	WB
Immunogen	The immunogen is a synthetic peptide directed towards the middle region of human SLC10A1
Target	SLC10A1
Preservatives	Liquid. Purified antibody supplied in 1x PBS buffer with 0.09% (w/v) sodium azide and 2% sucrose.
Form/Appearance	Liquid. Purified antibody supplied in 1x PBS buffer with 0.09% (w/v) sodium azide and 2% sucrose.
Concentration	0.5 mg/ml
Storage	Maintain refrigerated at 2-8°C for up to 2 weeks. For long term storage store at -20°C in small aliquots to prevent freeze-thaw cycles.
Note	For research use only
Protein Sequence	Synthetic peptide located within the following region: VFSLAMKGD MNLSIVMTTCSTFCALGMMPLLLYISRGIYDGDLDKDKVPY
Clonality	Polyclonal
MW	38 kDa
Uniprot ID	Q14973
NCBI	NP_003040
Expiration Date	12 months from date of receipt.

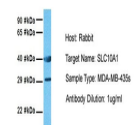


25 ug of the indicated Human whole cell ...



Host: Rabbit,
Target Name:
SLC10A1,
Samp...

SLC10A1



Host: Rabbit,
Target Name:
SLC10A1,
Samp...