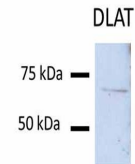


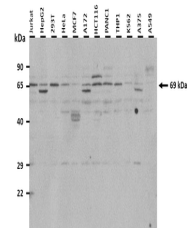
Product Datasheet

DLAT antibody (orb578300)

Description	Rabbit polyclonal antibody to DLAT
Species/Host	Rabbit
Reactivity	Human
Conjugation	Unconjugated
Tested Applications	IHC, WB
Immunogen	The immunogen is a synthetic peptide directed towards the N terminal region of human DLAT
Target	DLAT
Preservatives	Liquid. Purified antibody supplied in 1x PBS buffer with 0.09% (w/v) sodium azide and 2% sucrose.
Form/Appearance	Liquid. Purified antibody supplied in 1x PBS buffer with 0.09% (w/v) sodium azide and 2% sucrose.
Concentration	1.0 mg/ml
Storage	Maintain refrigerated at 2-8°C for up to 2 weeks. For long term storage store at -20°C in small aliquots to prevent freeze-thaw cycles.
Note	For research use only
Protein Sequence	Synthetic peptide located within the following region: WTPSSGATPRNRLLLQLLGSPGRRYYSLPPHQK/VPLPSLSPTMQAGTIAR
Clonality	Polyclonal
MW	69 kDa
Uniprot ID	P10515
NCBI	NP_001922
Expiration Date	12 months from date of receipt.

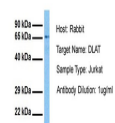


Sample Type:
Huh7 lysate (50 ug), Primar...



25 ug of the indicated
Human whole cell ...

DLAT



Host: Rabbit,
Target Name:
DLAT, Sample

...