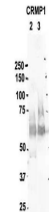


Product Datasheet

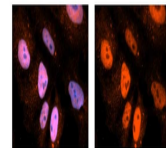
CRMP1 antibody (orb578278)

Description	Rabbit polyclonal antibody to CRMP1
Species/Host	Rabbit
Reactivity	Human, Mouse
Conjugation	Unconjugated
Tested Applications	IHC, IP, WB
Immunogen	The immunogen is a synthetic peptide directed towards the N terminal region of human CRMP1
Target	CRMP1
Preservatives	Liquid. Purified antibody supplied in 1x PBS buffer with 0.09% (w/v) sodium azide and 2% sucrose.
Form/Appearance	Liquid. Purified antibody supplied in 1x PBS buffer with 0.09% (w/v) sodium azide and 2% sucrose.
Concentration	0.5 mg/ml
Storage	Maintain refrigerated at 2-8°C for up to 2 weeks. For long term storage store at -20°C in small aliquots to prevent freeze-thaw cycles.
Note	For research use only
Protein Sequence	Synthetic peptide located within the following region: SYQGKKSIPHITSDRLLIKGGRIINDDQSLYADVYLEDGLIKQIGENLIV
Clonality	Polyclonal
MW	62kDa
Uniprot ID	Q14194
NCBI	NP_001304
Expiration Date	12 months from date of receipt.

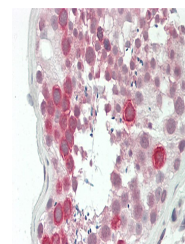


Sample Type:
2. mouse brain
extracts (80...

CRMP1



Sample Type:
NT2 cells, Red:
Antibody, B...



Rabbit Anti-
CRMP1
antibody,
Formalin Fix...