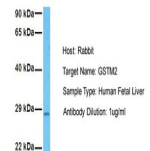


Product Datasheet

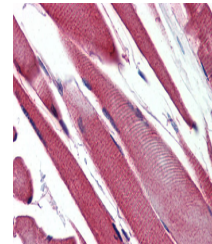
GSTM2 antibody (orb578232)

Description	Rabbit polyclonal antibody to GSTM2
Species/Host	Rabbit
Reactivity	Human
Conjugation	Unconjugated
Tested Applications	IHC, WB
Immunogen	The immunogen is a synthetic peptide directed towards the N terminal region of human GSTM2
Target	GSTM2
Preservatives	Liquid. Purified antibody supplied in 1x PBS buffer with 0.09% (w/v) sodium azide and 2% sucrose.
Form/Appearance	Liquid. Purified antibody supplied in 1x PBS buffer with 0.09% (w/v) sodium azide and 2% sucrose.
Concentration	0.5 mg/ml
Storage	Maintain refrigerated at 2-8°C for up to 2 weeks. For long term storage store at -20°C in small aliquots to prevent freeze-thaw cycles.
Note	For research use only
Protein Sequence	Synthetic peptide located within the following region: TQSNAILRYIARKHNLGGESEKEQIREIDILENQFMDSRMQLAKLCYDPDF
Clonality	Polyclonal
MW	26kDa
Uniprot ID	P28161
NCBI	NP_000839
Expiration Date	12 months from date of receipt.

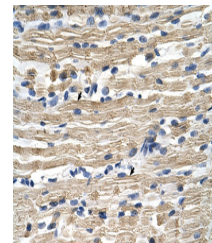
GSTM2



Sample Tissue: Human Fetal Liver, Antibo...



Immunohistochemistry with Human Skeletal...



Rabbit Anti-GSTM2 Antibody, Paraffin Emb...