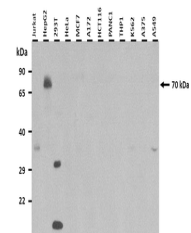


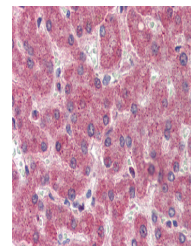
Product Datasheet

F2 antibody (orb578202)

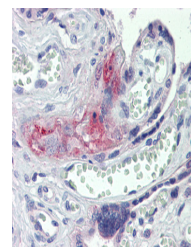
Description	Rabbit polyclonal antibody to F2
Species/Host	Rabbit
Reactivity	Human
Conjugation	Unconjugated
Tested Applications	IHC, WB
Immunogen	The immunogen is a synthetic peptide directed towards the middle region of human F2
Target	F2
Preservatives	Liquid. Purified antibody supplied in 1x PBS buffer with 0.09% (w/v) sodium azide and 2% sucrose.
Form/Appearance	Liquid. Purified antibody supplied in 1x PBS buffer with 0.09% (w/v) sodium azide and 2% sucrose.
Concentration	0.5 mg/ml
Storage	Maintain refrigerated at 2-8°C for up to 2 weeks. For long term storage store at -20°C in small aliquots to prevent freeze-thaw cycles.
Note	For research use only
Protein Sequence	Synthetic peptide located within the following region: ISDRWVLTAAHCLLYPPWDKNFTENDLLVRIGKHSRTRYERNIEKISMLE
Clonality	Polyclonal
MW	70 kDa
Uniprot ID	P00734
NCBI	NP_000497
Expiration Date	12 months from date of receipt.



25 ug of the indicated Human whole cell ...



Anti-F2 / Thrombin antibody IHC staining...



Anti-F2 / Thrombin antibody IHC staining...