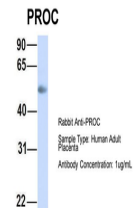


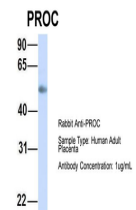
Product Datasheet

PROC antibody (orb578175)

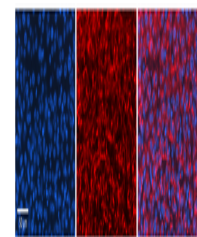
Description	Rabbit polyclonal antibody to PROC
Species/Host	Rabbit
Reactivity	Animal, Human
Conjugation	Unconjugated
Tested Applications	IHC, WB
Immunogen	The immunogen is a synthetic peptide directed towards the middle region of human PROC
Target	PROC
Preservatives	Liquid. Purified antibody supplied in 1x PBS buffer with 0.09% (w/v) sodium azide and 2% sucrose.
Form/Appearance	Liquid. Purified antibody supplied in 1x PBS buffer with 0.09% (w/v) sodium azide and 2% sucrose.
Concentration	0.5 mg/ml
Storage	Maintain refrigerated at 2-8°C for up to 2 weeks. For long term storage store at -20°C in small aliquots to prevent freeze-thaw cycles.
Note	For research use only
Protein Sequence	Synthetic peptide located within the following region: PCGRPWKRMKKRSHLKRDTEDQEDQVDPRLIDGKMTRRGDSPWQVLLD
Clonality	Polyclonal
MW	52kDa
Uniprot ID	P04070
NCBI	NP_000303
Expiration Date	12 months from date of receipt.



Host: Rabbit,
Target Name:
PROC, Sample
...



Host: Rabbit,
Target Name:
PROC, Sample
...



Rabbit Anti-
PROC Antibody,
Catalog
Numbe...