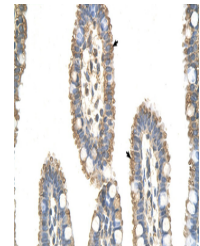


Product Datasheet

ANAPC7 antibody (orb578134)

Description	Rabbit polyclonal antibody to ANAPC7
Species/Host	Rabbit
Reactivity	Human
Conjugation	Unconjugated
Tested Applications	IHC, WB
Immunogen	The immunogen is a synthetic peptide directed towards the C terminal region of human ANAPC7
Target	ANAPC7
Preservatives	Liquid. Purified antibody supplied in 1x PBS buffer with 0.09% (w/v) sodium azide and 2% sucrose.
Form/Appearance	Liquid. Purified antibody supplied in 1x PBS buffer with 0.09% (w/v) sodium azide and 2% sucrose.
Concentration	0.5 mg/ml
Storage	Maintain refrigerated at 2-8°C for up to 2 weeks. For long term storage store at -20°C in small aliquots to prevent freeze-thaw cycles.
Note	For research use only
Protein Sequence	Synthetic peptide located within the following region: ALSLDPNDQKSLEGMQKMEKEESPTDATQEEDVDDMEGSGEEGDLEGSDS
Clonality	Polyclonal
MW	62kDa
Uniprot ID	Q9UJX3
NCBI	NP_057322
Expiration Date	12 months from date of receipt.



Rabbit Anti-ANAPC7 Antibody, Paraffin Em...



WB Suggested Anti-ANAPC7 Antibody Titrat...