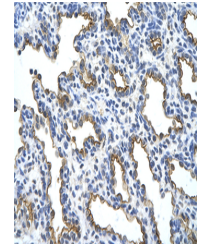


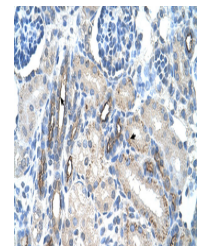
Product Datasheet

MUC1 antibody (orb578069)

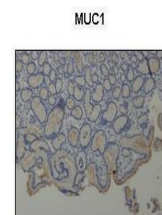
Description	Rabbit polyclonal antibody to MUC1
Species/Host	Rabbit
Reactivity	Human, Porcine
Conjugation	Unconjugated
Tested Applications	IHC, WB
Immunogen	The immunogen is a synthetic peptide directed towards the C terminal region of human MUC1
Target	MUC1
Preservatives	Liquid. Purified antibody supplied in 1x PBS buffer with 0.09% (w/v) sodium azide and 2% sucrose.
Form/Appearance	Liquid. Purified antibody supplied in 1x PBS buffer with 0.09% (w/v) sodium azide and 2% sucrose.
Concentration	1.0 mg/ml
Storage	Maintain refrigerated at 2-8°C for up to 2 weeks. For long term storage store at -20°C in small aliquots to prevent freeze-thaw cycles.
Note	For research use only
Protein Sequence	Synthetic peptide located within the following region: RRKNYGQLDIFPARDTYHPMSEYPTYHTHG RYVPPSSTDRSPYEKVSAGN
Clonality	Polyclonal
MW	22kDa
Uniprot ID	Q7Z552
NCBI	NP_001037855
Expiration Date	12 months from date of receipt.



Rabbit Anti-MUC1 Antibody, Paraffin Embe...



Rabbit Anti-MUC1 Antibody, Paraffin Embe...



Brown: MUC1 Blue: Nucleus

Sample Type:
Human
stomach,
Primary Anti...