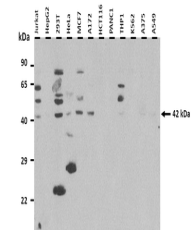


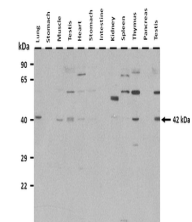
Product Datasheet

SFTPb antibody (orb578047)

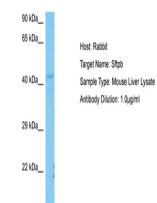
Description	Rabbit polyclonal antibody to SFTPb
Species/Host	Rabbit
Reactivity	Bovine, Canine, Guinea pig, Human, Mouse, Rat, Sheep
Conjugation	Unconjugated
Tested Applications	IHC, WB
Immunogen	The immunogen is a synthetic peptide directed towards the middle region of human SFTPb
Target	SFTPb
Preservatives	Liquid. Purified antibody supplied in 1x PBS buffer with 0.09% (w/v) sodium azide and 2% sucrose.
Form/Appearance	Liquid. Purified antibody supplied in 1x PBS buffer with 0.09% (w/v) sodium azide and 2% sucrose.
Concentration	0.5 mg/ml
Storage	Maintain refrigerated at 2-8°C for up to 2 weeks. For long term storage store at -20°C in small aliquots to prevent freeze-thaw cycles.
Note	For research use only
Protein Sequence	Synthetic peptide located within the following region: PGALQARPGPHTQDLSEQQFPIPLPYCWLRCRALIKRIQAMIPKGALAVAV
Clonality	Polyclonal
MW	42 kDa
Uniprot ID	P07988
NCBI	NP_000533
Expiration Date	12 months from date of receipt.



25 ug of the indicated Human whole cell ...



25 ug of the indicated Rat tissue extrac...



Host: Mouse,
Target Name:
SFTPb, Sample
...