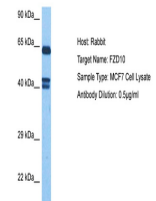


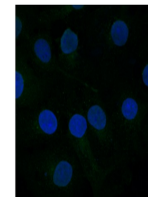
Product Datasheet

FZD10 antibody (orb577978)

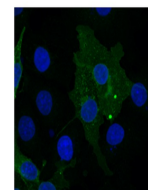
Description	Rabbit polyclonal antibody to FZD10
Species/Host	Rabbit
Reactivity	Human
Conjugation	Unconjugated
Tested Applications	IF
Immunogen	The immunogen is a synthetic peptide directed towards the following sequence GMWIIWTSKTLQSWQQVCSRRLKKKSRRKPASVITSGGIYKKAQHPQKTHH
Target	FZD10
Preservatives	Liquid. Purified antibody supplied in 1x PBS buffer with 0.09% (w/v) sodium azide and 2% sucrose.
Form/Appearance	Liquid. Purified antibody supplied in 1x PBS buffer with 0.09% (w/v) sodium azide and 2% sucrose.
Concentration	0.5 mg/ml
Storage	Maintain refrigerated at 2-8°C for up to 2 weeks. For long term storage store at -20°C in small aliquots to prevent freeze-thaw cycles.
Note	For research use only
Protein Sequence	Synthetic peptide located within the following region: GMWIIWTSKTLQSWQQVCSRRLKKKSRRKPASVITSGGIYKKAQHPQKTHH
Clonality	Polyclonal
MW	65 kDa
Uniprot ID	Q9ULW2
NCBI	NP_009128
Expiration Date	12 months from date of receipt.



Host: Rabbit,
Target Name:
FZD10,
Sample...



orb577978
FZD10
Antibody,
Sample type:
C...



orb577978
FZD10
Antibody,
Sample type:
C...