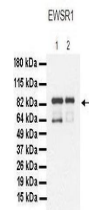


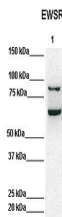
Product Datasheet

EWSR1 antibody (orb577758)

Description	Rabbit polyclonal antibody to EWSR1
Species/Host	Rabbit
Reactivity	Human
Conjugation	Unconjugated
Tested Applications	IHC, WB
Immunogen	The immunogen is a synthetic peptide directed towards the middle region of human EWSR1
Target	EWSR1
Preservatives	Liquid. Purified antibody supplied in 1x PBS buffer with 0.09% (w/v) sodium azide and 2% sucrose.
Form/Appearance	Liquid. Purified antibody supplied in 1x PBS buffer with 0.09% (w/v) sodium azide and 2% sucrose.
Concentration	0.5 mg/ml
Storage	Maintain refrigerated at 2-8°C for up to 2 weeks. For long term storage store at -20°C in small aliquots to prevent freeze-thaw cycles.
Note	For research use only
Protein Sequence	Synthetic peptide located within the following region: QPSSYGQSSYGQSSYGQPPTSYPPTGYSYSQAPSQYSQQSSSYGQQS
Clonality	Polyclonal
MW	68kDa
Uniprot ID	Q01844
NCBI	NP_005234
Expiration Date	12 months from date of receipt.



Lanes: 1. 30 ug MiaPaca-2 cell lysate, 2...



Lanes: Lane 1: 50 ug HeLa Lysate, Primar...



Rabbit Anti-EWSR1 antibody, Paraffin Emb...