

Product Datasheet

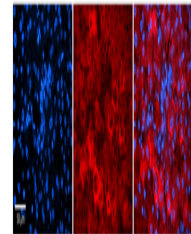
RACK1 antibody (orb577700)

Description	Rabbit polyclonal antibody to RACK1
Species/Host	Rabbit
Reactivity	Human
Conjugation	Unconjugated
Tested Applications	IHC, WB
Immunogen	The immunogen is a synthetic peptide directed towards the C terminal region of human GNB2L1
Target	RACK1
Preservatives	Liquid. Purified antibody supplied in 1x PBS buffer with 0.09% (w/v) sodium azide and 2% sucrose.
Form/Appearance	Liquid. Purified antibody supplied in 1x PBS buffer with 0.09% (w/v) sodium azide and 2% sucrose.
Concentration	0.5 mg/ml
Storage	Maintain refrigerated at 2-8°C for up to 2 weeks. For long term storage store at -20°C in small aliquots to prevent freeze-thaw cycles.
Note	For research use only
Protein Sequence	Synthetic peptide located within the following region: LEGKIIVDELKQEVISTSSKAEPQCTSLAWSADGQTLFAGYTDNLVRVW
Clonality	Polyclonal
MW	35kDa
Uniprot ID	P63244
NCBI	NP_006089
Expiration Date	12 months from date of receipt.

GNB2L1



Sample Type:
MCF-7 WT a
whole cell
lysat...



Rabbit Anti-
GNB2L1
Antibody,
Catalog Num...



WB Suggested
Anti-GNB2L1
Antibody
Titrat...