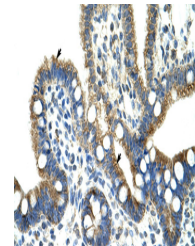


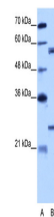
Product Datasheet

CPNE1 antibody (orb577627)

Description	Rabbit polyclonal antibody to CPNE1
Species/Host	Rabbit
Reactivity	Human
Conjugation	Unconjugated
Tested Applications	IHC, WB
Immunogen	The immunogen is a synthetic peptide directed towards the N terminal region of human CPNE1
Target	CPNE1
Preservatives	Liquid. Purified antibody supplied in 1x PBS buffer with 0.09% (w/v) sodium azide and 2% sucrose.
Form/Appearance	Liquid. Purified antibody supplied in 1x PBS buffer with 0.09% (w/v) sodium azide and 2% sucrose.
Concentration	1.0 mg/ml
Storage	Maintain refrigerated at 2-8°C for up to 2 weeks. For long term storage store at -20°C in small aliquots to prevent freeze-thaw cycles.
Note	For research use only
Protein Sequence	Synthetic peptide located within the following region: TVQKLRFGIYDIDNKTPELRDDDFLGGAECSLGQIVSSQVLTPLMLKPG
Clonality	Polyclonal
MW	59kDa
Uniprot ID	Q99829
NCBI	NP_003906
Expiration Date	12 months from date of receipt.



Rabbit Anti-CPNE1 Antibody, Paraffin Emb...



WB Suggested Anti-CPNE1 Antibody Titration