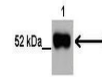


Product Datasheet

NOVA2 antibody (orb577564)

Description	Rabbit polyclonal antibody to NOVA2
Species/Host	Rabbit
Reactivity	Human
Conjugation	Unconjugated
Tested Applications	WB
Immunogen	The immunogen is a synthetic peptide directed towards the N terminal region of human NOVA2
Target	NOVA2
Preservatives	Liquid. Purified antibody supplied in 1x PBS buffer with 0.09% (w/v) sodium azide and 2% sucrose.
Form/Appearance	Liquid. Purified antibody supplied in 1x PBS buffer with 0.09% (w/v) sodium azide and 2% sucrose.
Concentration	1.0 mg/ml
Storage	Maintain refrigerated at 2-8°C for up to 2 weeks. For long term storage store at -20°C in small aliquots to prevent freeze-thaw cycles.
Note	For research use only
Protein Sequence	Synthetic peptide located within the following region: MEPEAPDSRKRPLETPPEVVCTKRSNTGEEGEYFLKVLIPSYAAGSIIGK
Clonality	Polyclonal
MW	54kDa
Uniprot ID	Q9UNW9
NCBI	NP_002507
Expiration Date	12 months from date of receipt.

Nova2



Lanes: 1. 10 ug human neural cell lysate...



WB Suggested Anti-NOVA2 Antibody Titrati...