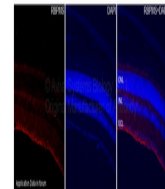


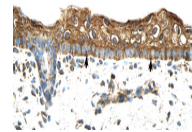
Product Datasheet

RBPM5 antibody (orb577515)

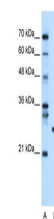
Description	Rabbit polyclonal antibody to RBPM5
Species/Host	Rabbit
Reactivity	Human, Mouse
Conjugation	Unconjugated
Tested Applications	ICC, IHC, WB
Immunogen	The immunogen is a synthetic peptide directed towards the N terminal region of human RBPM5
Target	RBPM5
Preservatives	Liquid. Purified antibody supplied in 1x PBS buffer with 0.09% (w/v) sodium azide and 2% sucrose.
Form/Appearance	Liquid. Purified antibody supplied in 1x PBS buffer with 0.09% (w/v) sodium azide and 2% sucrose.
Concentration	1.0 mg/ml
Storage	Maintain refrigerated at 2-8°C for up to 2 weeks. For long term storage store at -20°C in small aliquots to prevent freeze-thaw cycles.
Note	For research use only
Protein Sequence	Synthetic peptide located within the following region: LFRPFKGYEGSLIKLTSKQPVG FVSFDSRSEAEAAKNALNGIRFDPEIPQ
Clonality	Polyclonal
MW	24kDa
Uniprot ID	Q93062
NCBI	NP_001008712
Expiration Date	12 months from date of receipt.



Mouse Retina Fixation of the tissues wit...



Rabbit Anti-RBPM5 Antibody, Paraffin Emb...



WB Suggested Anti-RBPM5 Antibody Titration...