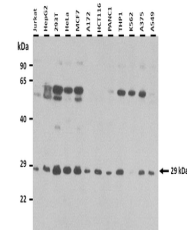


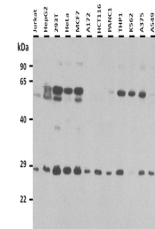
Product Datasheet

RBPM5 antibody (orb577513)

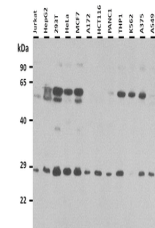
Description	Rabbit polyclonal antibody to RBPM5
Species/Host	Rabbit
Reactivity	Human
Conjugation	Unconjugated
Tested Applications	WB
Immunogen	The immunogen is a synthetic peptide directed towards the N terminal region of human RBPM5
Target	RBPM5
Preservatives	Liquid. Purified antibody supplied in 1x PBS buffer with 0.09% (w/v) sodium azide and 2% sucrose.
Form/Appearance	Liquid. Purified antibody supplied in 1x PBS buffer with 0.09% (w/v) sodium azide and 2% sucrose.
Concentration	0.5 mg/ml
Storage	Maintain refrigerated at 2-8°C for up to 2 weeks. For long term storage store at -20°C in small aliquots to prevent freeze-thaw cycles.
Note	For research use only
Protein Sequence	Synthetic peptide located within the following region: RELYLLFRPFKGYEGSLIKLTSKQPVGFVSFDSRSEAEAAKNALNGIRFD
Clonality	Polyclonal
MW	22 kDa
Uniprot ID	Q93062
NCBI	NP_001008710
Expiration Date	12 months from date of receipt.



25 ug of the indicated Human whole cell ...



25 ug of the indicated Human whole cell ...



25 ug of the indicated Human whole cell ...