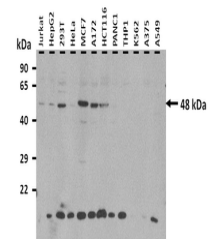


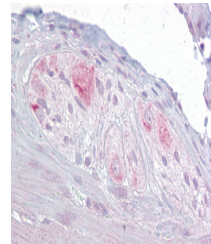
Product Datasheet

RBMS3 antibody (orb577498)

Description	Rabbit polyclonal antibody to RBMS3
Species/Host	Rabbit
Reactivity	Animal, Bovine, Canine, Guinea pig, Human, Mouse, Rat
Conjugation	Unconjugated
Tested Applications	IHC, WB
Immunogen	The immunogen is a synthetic peptide directed towards the middle region of human RBMS3
Target	RBMS3
Preservatives	Liquid. Purified antibody supplied in 1x PBS buffer with 0.09% (w/v) sodium azide and 2% sucrose.
Form/Appearance	Liquid. Purified antibody supplied in 1x PBS buffer with 0.09% (w/v) sodium azide and 2% sucrose.
Concentration	0.5 mg/ml
Storage	Maintain refrigerated at 2-8°C for up to 2 weeks. For long term storage store at -20°C in small aliquots to prevent freeze-thaw cycles.
Note	For research use only
Protein Sequence	Synthetic peptide located within the following region: PTAVSIEGVVADTSPQTVAPSSQDTSGQQQIADVDT SNEHAPAYS YQQSK
Clonality	Polyclonal
MW	48 kDa
Uniprot ID	Q6XE24
NCBI	NP_001003792
Expiration Date	12 months from date of receipt.



25 ug of the indicated Human whole cell ...



Immunohistochemistry with Small intestin...



WB Suggested Anti-RBMS3 Antibody Titrati...