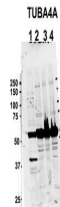


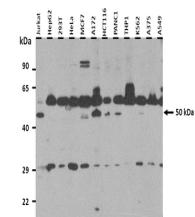
Product Datasheet

TUBA4A antibody (orb577468)

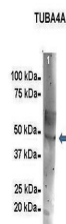
Description	Rabbit polyclonal antibody to TUBA4A
Species/Host	Rabbit
Reactivity	Human, Mouse
Conjugation	Unconjugated
Tested Applications	IHC, IP, WB
Immunogen	The immunogen is a synthetic peptide directed towards the middle region of human TUBA4A
Target	TUBA4A
Preservatives	Liquid. Purified antibody supplied in 1x PBS buffer with 0.09% (w/v) sodium azide and 2% sucrose.
Form/Appearance	Liquid. Purified antibody supplied in 1x PBS buffer with 0.09% (w/v) sodium azide and 2% sucrose.
Concentration	0.5 mg/ml
Storage	Maintain refrigerated at 2-8°C for up to 2 weeks. For long term storage store at -20°C in small aliquots to prevent freeze-thaw cycles.
Note	For research use only
Protein Sequence	Synthetic peptide located within the following region: YAKRAFVHWYVVGEGMEEGEFSEAREDMAALEKDYEEVGDIDSYEDEDEGEE
Clonality	Polyclonal
MW	50 kDa
Uniprot ID	P68366
NCBI	NP_005991
Expiration Date	12 months from date of receipt.



Sample Type: 1.
Human NT-2
cells (60 ug)...



25 ug of the
indicated
Human whole
cell ...



Amount and
Sample Type:
500 ug mouse
bra...