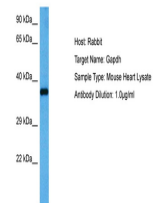


Product Datasheet

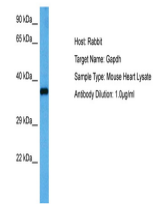
GAPDH antibody (orb577465)

Description	Rabbit polyclonal antibody to GAPDH
Species/Host	Rabbit
Reactivity	Human, Mouse, Rat
Conjugation	Unconjugated
Tested Applications	WB
Immunogen	The immunogen is a synthetic peptide directed towards the middle region of human GAPDH
Target	GAPDH
Preservatives	Liquid. Purified antibody supplied in 1x PBS buffer with 0.09% (w/v) sodium azide and 2% sucrose.
Form/Appearance	Liquid. Purified antibody supplied in 1x PBS buffer with 0.09% (w/v) sodium azide and 2% sucrose.
Concentration	0.5 mg/ml
Storage	Maintain refrigerated at 2-8°C for up to 2 weeks. For long term storage store at -20°C in small aliquots to prevent freeze-thaw cycles.
Note	For research use only
Protein Sequence	Synthetic peptide located within the following region: KAGAHLQGGAKRVIISAPSADAPMFVMGVNHEKYDNSLKIISNASCTTNC
Clonality	Polyclonal
MW	36kDa
Uniprot ID	P04406
NCBI	NP_002037
Expiration Date	12 months from date of receipt.

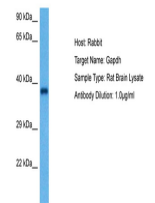


Host: Mouse,
Target Name:
GAPDH, Sample

...



Host: Rabbit,
Target Name:
GAPDH,
Sample...



Host: Rabbit,
Target Name:
GAPDH,
Sample...