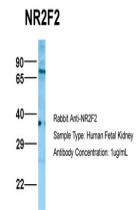


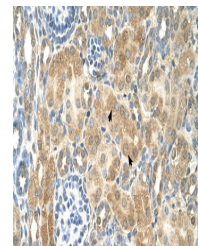
Product Datasheet

NR2F2 antibody (orb577130)

Description	Rabbit polyclonal antibody to NR2F2
Species/Host	Rabbit
Reactivity	Human
Conjugation	Unconjugated
Tested Applications	IHC, WB
Immunogen	The immunogen is a synthetic peptide directed towards the N terminal region of human NR2F2
Target	NR2F2
Preservatives	Liquid. Purified antibody supplied in 1x PBS buffer with 0.09% (w/v) sodium azide and 2% sucrose.
Form/Appearance	Liquid. Purified antibody supplied in 1x PBS buffer with 0.09% (w/v) sodium azide and 2% sucrose.
Concentration	1.0 mg/ml
Storage	Maintain refrigerated at 2-8°C for up to 2 weeks. For long term storage store at -20°C in small aliquots to prevent freeze-thaw cycles.
Note	For research use only
Protein Sequence	Synthetic peptide located within the following region: QDEVPGSQGSQASQAPPVPGPPPGAPHTPQTPGQGGPASTPAQTAAGGQG
Clonality	Polyclonal
MW	45kDa
Uniprot ID	P24468
NCBI	NP_066285
Expiration Date	12 months from date of receipt.



Host: Rabbit,
Target Name:
NR2F2,
Sample...



Human kidney



WB Suggested
Antibody
Titration: 2.5
ug/...