

Product Datasheet

KLF2 Rabbit Polyclonal Antibody (orb577025)

| | |
|----------------------------|---|
| Description | Rabbit polyclonal antibody to KLF2 |
| Species/Host | Rabbit |
| Reactivity | Human, Mouse |
| Conjugation | Unconjugated |
| Tested Applications | WB |
| Immunogen | The immunogen is a synthetic peptide directed towards the middle region of human KLF2 |
| Target | KLF2 |
| Preservatives | Liquid. Purified antibody supplied in 1x PBS buffer with 0.09% (w/v) sodium azide and 2% sucrose. |
| Form/Appearance | Liquid. Purified antibody supplied in 1x PBS buffer with 0.09% (w/v) sodium azide and 2% sucrose. |
| Concentration | 0.5 mg/ml |
| Storage | Maintain refrigerated at 2-8°C for up to 2 weeks. For long term storage store at -20°C in small aliquots to prevent freeze-thaw cycles. |
| Note | For research use only |
| Protein Sequence | Synthetic peptide located within the following region: NWDGCGWKFARSDELTRHYRKHTGHRPFQCHLCDRAFSRSDHLALHMKRH |
| Clonality | Polyclonal |
| MW | 37kDa |
| Uniprot ID | Q9Y5W3 |

Biorbyt Ltd.

7 Signet Court, Swann's Road,
Cambridge, CB5 8LA, United Kingdom
Email: info@biorbyt.com, support@biorbyt.com
Phone: [+44 \(0\) 1223 859-353](tel:+44(0)1223859353) | Fax: [+1 \(415\) 651-8558](tel:+1(415)6518558)

Biorbyt LLC.

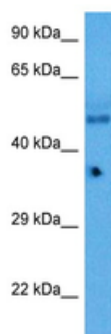
68 TW Alexander Drive,
Durham, NC, 27713, United States
Email: info@biorbyt.com, support@biorbyt.com
Phone: [+1 \(415\) 906-5211](tel:+1(415)9065211) | Fax: [+1 \(415\) 651-8558](tel:+1(415)6518558)

NCBI

NP_057354

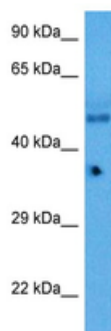
Expiration Date

12 months from date of receipt.



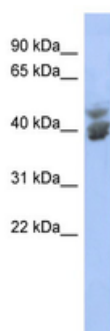
Host: Rabbit
Target Name: Klf5
Sample Type: Mouse Pancreas Lysate
Antibody Dilution: 1.0µg/ml

Sample Tissue: Mouse Pancreas, Antibody Dilution: 1 ug/ml.



Host: Rabbit
Target Name: Klf5
Sample Type: Mouse Pancreas Lysate
Antibody Dilution: 1.0µg/ml

Sample Tissue: Mouse Pancreas, Antibody Dilution: 1 ug/ml.



WB Suggested Anti-KLF2 Antibody Titration: 0.2-1 ug/ml, ELISA Titer: 1:62500, Positive Control: NCI-H226 cell lysate.

Biorbyt Ltd.

7 Signet Court, Swann's Road,
Cambridge, CB5 8LA, United Kingdom
Email: info@biorbyt.com, support@biorbyt.com
Phone: [+44 \(0\) 1223 859-353](tel:+44(0)1223859353) | Fax: [+1 \(415\) 651-8558](tel:+1(415)6518558)

Biorbyt LLC.

68 TW Alexander Drive,
Durham, NC, 27713, United States
Email: info@biorbyt.com, support@biorbyt.com
Phone: [+1 \(415\) 906-5211](tel:+1(415)9065211) | Fax: [+1 \(415\) 651-8558](tel:+1(415)6518558)