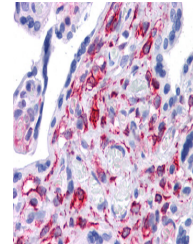


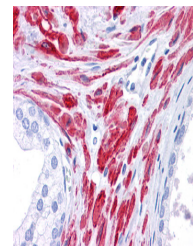
Product Datasheet

STAT5B antibody (orb576926)

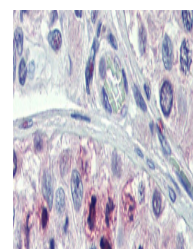
Description	Rabbit polyclonal antibody to STAT5B
Species/Host	Rabbit
Reactivity	Human
Conjugation	Unconjugated
Tested Applications	IHC, WB
Immunogen	The immunogen is a synthetic peptide directed towards the N terminal region of human STAT5B
Target	STAT5B
Preservatives	Liquid. Purified antibody supplied in 1x PBS buffer with 0.09% (w/v) sodium azide and 2% sucrose.
Form/Appearance	Liquid. Purified antibody supplied in 1x PBS buffer with 0.09% (w/v) sodium azide and 2% sucrose.
Concentration	0.5 mg/ml
Storage	Maintain refrigerated at 2-8°C for up to 2 weeks. For long term storage store at -20°C in small aliquots to prevent freeze-thaw cycles.
Note	For research use only
Protein Sequence	Synthetic peptide located within the following region: AVWIQAQQLQGEALHQMQUALYGQHFPIEVRHYLSQWIESQAWDSVDLDNP
Clonality	Polyclonal
MW	90kDa
Uniprot ID	P51692
NCBI	NP_036580
Expiration Date	12 months from date of receipt.



Anti-STAT5B antibody IHC staining of hum...



Anti-STAT5B antibody IHC staining of hum...



Rabbit Anti-STAT5B Antibody, Paraffin Em...