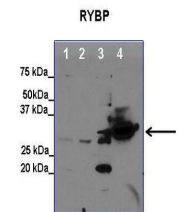


Product Datasheet

RYBP antibody (orb576915)

Description	Rabbit polyclonal antibody to RYBP
Species/Host	Rabbit
Reactivity	Human
Conjugation	Unconjugated
Tested Applications	WB
Immunogen	The immunogen is a synthetic peptide directed towards the C terminal region of human RYBP
Target	RYBP
Preservatives	Liquid. Purified antibody supplied in 1x PBS buffer with 0.09% (w/v) sodium azide and 2% sucrose.
Form/Appearance	Liquid. Purified antibody supplied in 1x PBS buffer with 0.09% (w/v) sodium azide and 2% sucrose.
Concentration	0.5 mg/ml
Storage	Maintain refrigerated at 2-8°C for up to 2 weeks. For long term storage store at -20°C in small aliquots to prevent freeze-thaw cycles.
Note	For research use only
Protein Sequence	Synthetic peptide located within the following region: STSSSTVTSSAGSEQNQSSSGSESTDKGSSRSSTPKGDMSAVNDESF
Clonality	Polyclonal
MW	25kDa
Uniprot ID	Q8N488
NCBI	NP_036366
Expiration Date	12 months from date of receipt.



Lanes: 1. 50 ug 38B9 cell lysate, 2. 50 ...



WB Suggested Anti-RYBP Antibody Titratio...