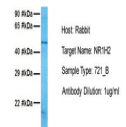


Product Datasheet

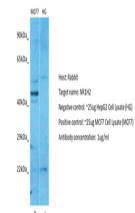
NR1H2 antibody (orb576881)

Description	Rabbit polyclonal antibody to NR1H2
Species/Host	Rabbit
Reactivity	Human
Conjugation	Unconjugated
Tested Applications	WB
Immunogen	The immunogen is a synthetic peptide directed towards the N terminal region of human NR1H2
Target	NR1H2
Preservatives	Liquid. Purified antibody supplied in 1x PBS buffer with 0.09% (w/v) sodium azide and 2% sucrose.
Form/Appearance	Liquid. Purified antibody supplied in 1x PBS buffer with 0.09% (w/v) sodium azide and 2% sucrose.
Concentration	1.0 mg/ml
Storage	Maintain refrigerated at 2-8°C for up to 2 weeks. For long term storage store at -20°C in small aliquots to prevent freeze-thaw cycles.
Note	For research use only
Application notes	Application Info: ChIP
Protein Sequence	Synthetic peptide located within the following region: GNGPPQPAGPSSSPTVKEEGPEPWGGPDPDVPDPTDEASSACSTDWVIPD
Clonality	Polyclonal
MW	51kDa
Uniprot ID	Q68CY8
NCBI	NP_009052
Expiration Date	12 months from date of receipt.

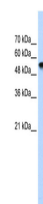
NR1H2



Host: Rabbit,
Target Name:
NR1H2,
Sample...



Host: Rabbit,
Target: NR1H2,
Positive co...



WB Suggested
Anti-NR1H2
Antibody
Titrati...