
Product Datasheet

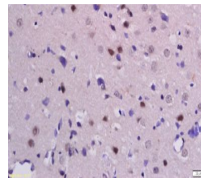
**beta Catenin (phospho-Ser33/37) antibody
(orb5768)**

Description

beta Catenin (phospho-Ser33/37) antibody


Species/Host

Rabbit


Reactivity

Human, Mouse, Rat

Conjugation

Unconjugated

Tested

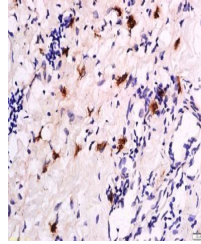
FC, IHC-P

Applications

Immunohistochemical staining of rat brai...

Immunogen

KLH conjugated Synthesised phosphopeptide derived from human Beta-Catenin around the phosphorylation site of Ser33/37 (LD(p-S)GIH(p-S)GA)


Target

Phospho-Beta-Catenin (Ser33 + Ser37)

Preservatives

0.01M TBS(pH7.4) with 1% rAlbumin, 0.03% Proclin300 and 50% Glycerol.

Form/Appearance

Liquid

Immunohistochemical staining of rat brai...

Concentration

1mg/ml

Storage

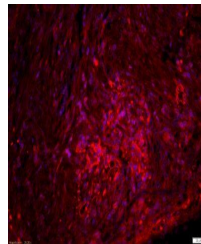
Shipped at 4°C. Store at -20 °C for one year. Avoid repeated freeze/thaw cycles.

Note

For research use only

Isotype

IgG


Clonality

Polyclonal

Immunohistochemical staining of human la...

MW

86 kDa

Uniprot ID
[P35222](#)
Dilution Range

IHC-P=1:100-500, Flow-Cyt=0.2µg /test, WB=1:500-2000, IHC-F=1:100-500, ICC=1:100-500, IF=1:100-500, ELISA=1:5000-10000

Expiration Date

12 months from date of receipt.