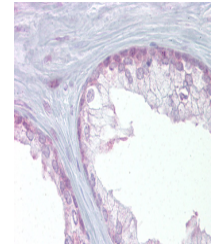


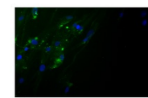
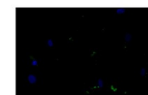
Product Datasheet

EDF1 antibody (orb576652)

Description	Rabbit polyclonal antibody to EDF1
Species/Host	Rabbit
Reactivity	Human
Conjugation	Unconjugated
Tested Applications	IF, IHC, WB
Immunogen	The immunogen is a synthetic peptide directed towards the middle region of human EDF1
Target	EDF1
Preservatives	Liquid. Purified antibody supplied in 1x PBS buffer with 0.09% (w/v) sodium azide and 2% sucrose.
Form/Appearance	Liquid. Purified antibody supplied in 1x PBS buffer with 0.09% (w/v) sodium azide and 2% sucrose.
Concentration	0.5 mg/ml
Storage	Maintain refrigerated at 2-8°C for up to 2 weeks. For long term storage store at -20°C in small aliquots to prevent freeze-thaw cycles.
Note	For research use only
Protein Sequence	Synthetic peptide located within the following region: INEKPQVIADYESGRAIPNNQVLGKIERAIGLKLRLRGKDIGKPIEKGPRAK
Clonality	Polyclonal
MW	16kDa
Uniprot ID	O60869
NCBI	NP_003783
Expiration Date	12 months from date of receipt.



Immunohistochemistry with Prostate tissue...



Sample Type: Fibroblasts.



WB Suggested Anti-EDF1 Antibody Titration...