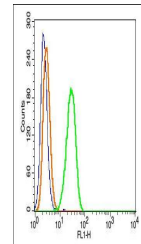


Product Datasheet

Caspase 9 (phospho-Tyr153) antibody (orb5766)

Description	Caspase 9 (phospho-Tyr153) antibody
Species/Host	Rabbit
Reactivity	Human, Mouse
Conjugation	Unconjugated
Tested Applications	FC, IHC-P, WB
Immunogen	KLH conjugated Synthesised phosphopeptide derived from human Caspase 9 around the phosphorylation site of Tyr153 (LA(p-Y)IL)
Target	Phospho-Caspase-9 (Tyr153)
Preservatives	0.01M TBS(pH7.4) with 1% rAlbumin, 0.03% Proclin300 and 50% Glycerol.
Form/Appearance	Liquid
Concentration	1mg/ml
Storage	Shipped at 4°C. Store at -20 °C for one year. Avoid repeated freeze/thaw cycles.
Note	For research use only
Isotype	IgG
Clonality	Polyclonal
MW	35 kDa
Uniprot ID	P55211
Dilution Range	WB=1:500-2000, IHC-P=1:100-500, Flow-Cyt=1µg /test, IHC-F=1:100-500, IF=1:100-500, ELISA=1:5000-10000
Expiration Date	12 months from date of receipt.



Flow cytometric analysis of HeLa cells u...