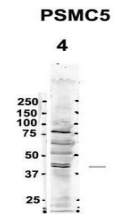


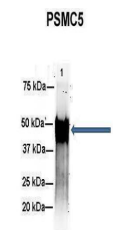
Product Datasheet

PSMC5 antibody (orb576569)

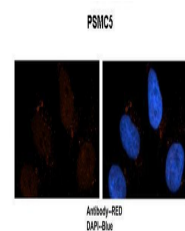
Description	Rabbit polyclonal antibody to PSMC5
Species/Host	Rabbit
Reactivity	Human, Mouse
Conjugation	Unconjugated
Tested Applications	IHC, IP, WB
Immunogen	The immunogen is a synthetic peptide directed towards the C terminal region of human PSMC5
Target	PSMC5
Preservatives	Liquid. Purified antibody supplied in 1x PBS buffer with 0.09% (w/v) sodium azide and 2% sucrose.
Form/Appearance	Liquid. Purified antibody supplied in 1x PBS buffer with 0.09% (w/v) sodium azide and 2% sucrose.
Concentration	1.0 mg/ml
Storage	Maintain refrigerated at 2-8°C for up to 2 weeks. For long term storage store at -20°C in small aliquots to prevent freeze-thaw cycles.
Note	For research use only
Protein Sequence	Synthetic peptide located within the following region: AEVKGVCTEAGMYALRERRVHVHTQEDFEMAVAKVMQKDSEKNMSIKKLWK
Clonality	Polyclonal
MW	46kDa
Uniprot ID	P62195
NCBI	NP_002796
Expiration Date	12 months from date of receipt.



Sample Type: 4.
rat brain extract
(80 ug...



Amount and
Sample Type:
500 ug mouse
bra...



Sample Type:
Human brain
stem cells, Pri...