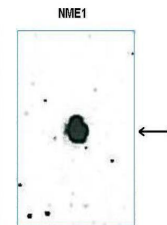


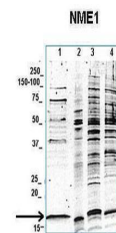
Product Datasheet

Nme1 antibody (orb576557)

Description	Rabbit polyclonal antibody to Nme1
Species/Host	Rabbit
Reactivity	Human, Mouse
Conjugation	Unconjugated
Tested Applications	DOT, WB
Target	Nme1
Preservatives	Liquid. Purified antibody supplied in 1x PBS buffer with 0.09% (w/v) sodium azide and 2% sucrose.
Form/Appearance	Liquid. Purified antibody supplied in 1x PBS buffer with 0.09% (w/v) sodium azide and 2% sucrose.
Concentration	0.5 mg/ml
Storage	Maintain refrigerated at 2-8°C for up to 2 weeks. For long term storage store at -20°C in small aliquots to prevent freeze-thaw cycles.
Note	For research use only
Protein Sequence	Synthetic peptide located within the following region: NVVKTGRVMLGETNPADSKPGTIRGDFCIQVGRNIIHGSDSVKSAEKEIS
Clonality	Polyclonal
MW	17kDa
Uniprot ID	P15532
NCBI	NP_032730
Expiration Date	12 months from date of receipt.



DB Suggested Anti-Nme1 antibody, Titration...



Lanes: 1. 20 ug human MDA-MB-231 cell ly...



WB Suggested Anti-Nme1 Antibody, Titration...